

# Paper Boat

A vibrant watercolor illustration serves as the background. At the top, a large, multi-colored rainbow arches across the sky. To the right, a bright yellow sun with a face is surrounded by small black star-like marks. The sky is filled with soft, blended colors of blue, purple, and pink. In the bottom left, a girl with long brown hair, wearing a red and black patterned dress, stands on a white paper boat with yellow sails. The boat is on a blue sea. In the bottom right, a small, colorful paper boat floats on the water. The bottom of the image features a row of stylized, colorful flowers in shades of pink, purple, and blue.

---

What's  
involved in  
**being**  
involved

---

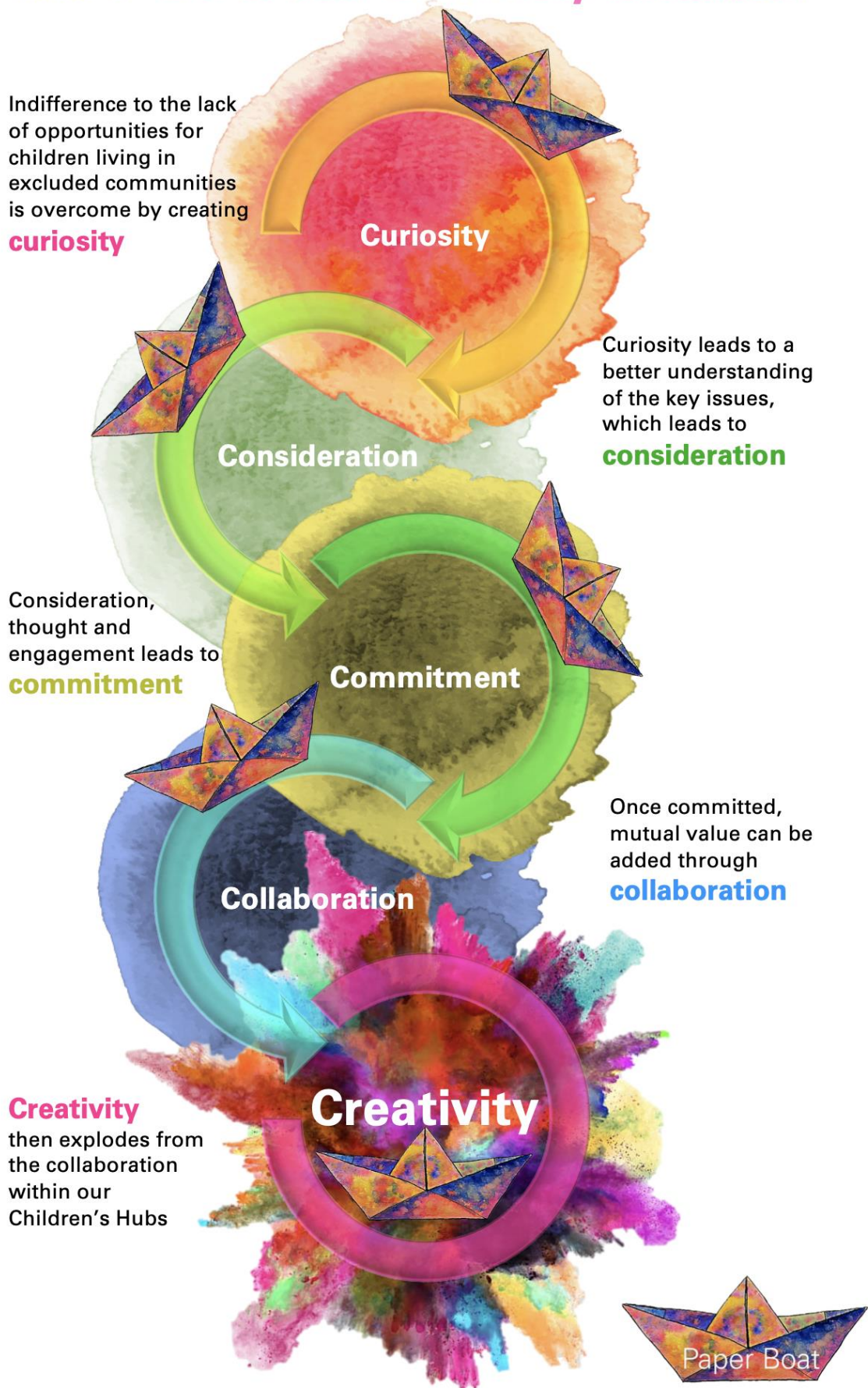
Our Operational Model

A world that unlocks the infinite potential of every child



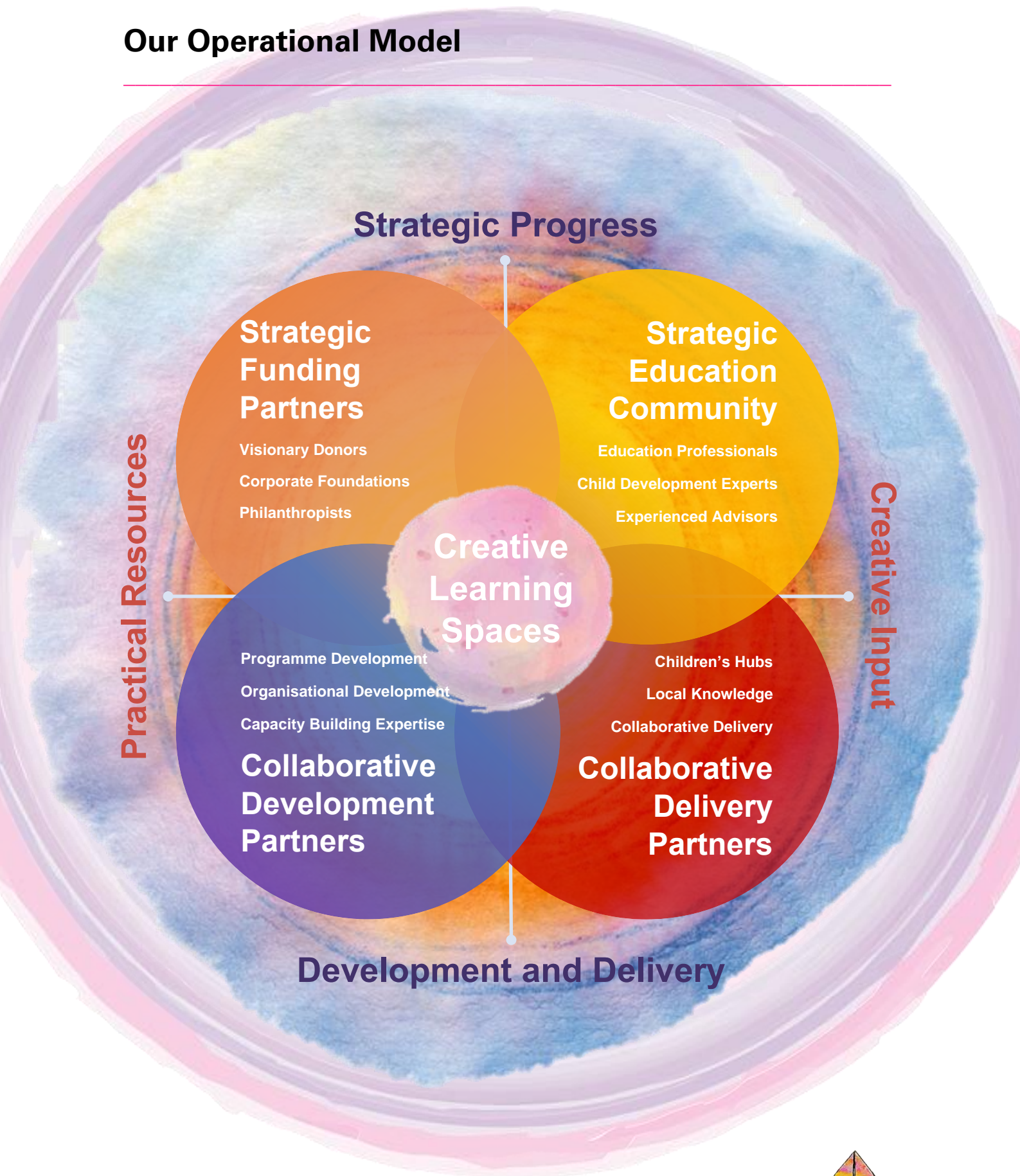
# How we engage with individuals and organisations

## The 5 'C's of our Creativity Coalition



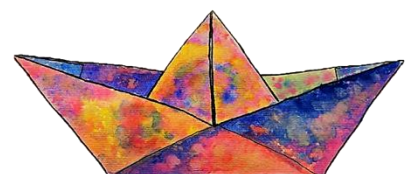
## Our Operational Model

---



Inspiring and enabling children to change their world

---





## Strategic Funding Partners

These partners comprise visionary donors, philanthropists, investors and foundations who are committed to inspiring and enabling children through play and creativity.

They bring strategic investment and vital resources to the Paper Boat Community. In return, Paper Boat offers an exciting network of creative learning spaces in hard to reach communities with dynamic people and partners to help drive that innovation.

## Strategic Education Community

These advisors are a diverse pool of talented individuals such as education professionals and child development experts who all have a passion for shaping world class creative learning spaces.

They bring conviction, expertise and thought leadership. In return, Paper Boat offers a stimulating community of brilliant educationalists to collaborate with - all of whom are deeply committed to unlocking children's potential.



## Collaborative Development Partners

These forward looking individuals and organisations add unique value to our programmes, goals and development as we navigate together with a common purpose.

They bring diverse skills and approaches, invaluable insights from other sectors, and capacity building expertise. In return, Paper Boat offers them a way to get involved with creative projects that help children set sail on an ocean of endless possibility.

## Collaborative Delivery Partners

These outstanding local organisations lead transformative change within their own communities through the creation of exciting learning spaces called 'Children's Hubs'.

They bring capability, integrity and deep local knowledge. They're essential to who we are and what we do. In return, Paper Boat offers resources, expertise and cutting-edge approaches that maximise their impact.

# Our Operational Model

---

Paper Boat has developed a unique and innovative operational model (set out in our value proposition on the previous page). We bring together diverse stakeholders who each contribute specialist skills and resources to help us design and deliver our creative learning spaces. They comprise four main groups:

- Strategic Funding Partners
- Strategic Education Community
- Collaborative Development Partners
- Collaborative Delivery Partners

These include people and organisations who provide knowledge and expertise in education, learning and organisational development. They help us to cultivate cutting edge tools, resources, approaches and models, drawing on the very latest thinking and best practice. All of which help us to shape world class creative learning spaces for the hardest to reach communities.

Two of the groups focus on our strategic progress and the other two work on our development and delivery. Creative input and practical resources combine to establish creative learning spaces for children in excluded communities and slums. These Children's Hubs equip them with the skills, confidence and experience that are needed to change their world.

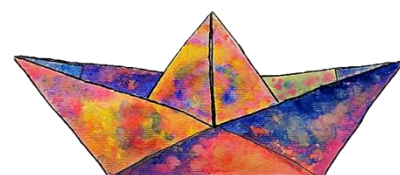


Our advisors and partners contribute their time and expertise on a voluntary or reduced cost basis, helping us to deliver exceptional value for money.

The following pages provide examples of the individuals and organisations who collaborate with us to unlock the infinite potential of every child.

---

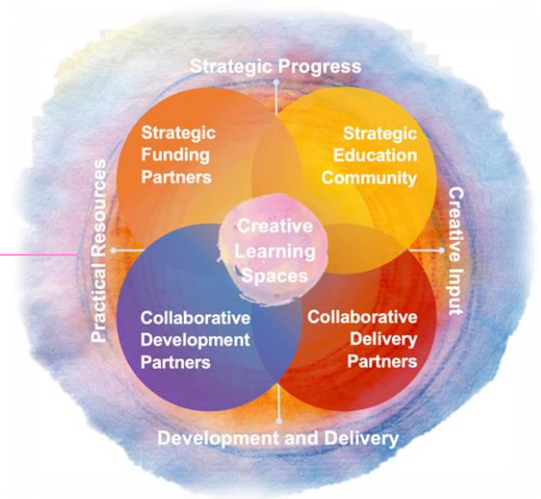
**Inspiring and enabling children to change their world**





# Strategic Funding Partners

An example: Wilshire Skyline

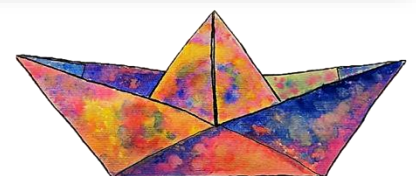


**Strategic Funding Partners** bring strategic investment and vital resources to the Paper Boat Community through their commitment to a shared vision. Los Angeles based property management company **Wilshire Skyline** are a new and exciting addition to the Paper Boat Community who have committed to donating their technical fees to Paper Boat, and invite residents to match that contribution as part of their tenancy agreement. They are deeply committed to delivering higher standards of living in beautiful buildings that shape some of the most prestigious and iconic skylines in the world - Santa Monica, Malibu, Hollywood and Beverly Hills. A core part of their mission is deep commitment “to quality in all things with all people”.

At the core of Paper Boat’s partnership with Wilshire Skyline lies a shared ambition to unlock the creative potential of children by giving them a platform that will help to strengthen and amplify voices that have all too often been silenced. This innovative partnership connects vulnerable children with those living very different lives in Wilshire Skyline properties and opens up a vast range of possibilities for those who are willing to reach out to invest in children’s ideas, amplify their voices and believe in them loudly.

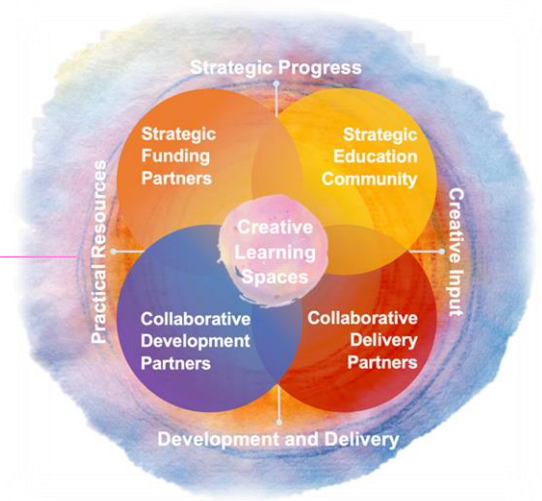


Inspiring and enabling children to change their world



# Strategic Education Community

An example: Ann Alder & Dr Vicki Howe



The **Strategic Education Community** helps to provide strategic and creative input. Two of the members are Ann (pictured left) and Vicki (pictured right). Both are also advisors from our Collaborative Development Partner, Caplor Horizons. This demonstrates how there is teamwork between the different groups within our organisation.

Both Ann and Vicki are helping to design and develop the 'Paper Ark' tool kit.



**Ann Alder** is a director and co-owner of RSVP design Ltd – a successful learning design company that specialises in the creation of activity based learning tools, resources, programmes and events. She is also a highly experienced and skilled facilitator, coach and designer of experiential learning.

She specialises in transferring knowledge and skills, gained over 30 years in learning and development, to other professionals through her writing, coaching, mentoring and delivery of highly regarded international training workshops.

Ann is the author of 'Pattern-Making, Pattern Breaking', a practical guide to designing and facilitating learning. Ann has been pivotal to the creation and delivery of various highly distinctive tools and she has generated many of the resources that help form our organisation's backbone in terms of its creative approach to experiential learning.

Inspiring and enabling children to change their world





**Dr Vicki Howe** is an executive coach and leadership development professional who specialises in inspiring and enabling children and adults to lead transformative change.

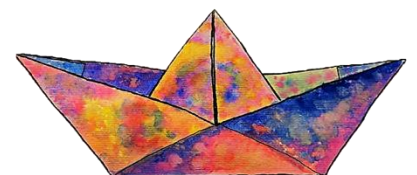


She is a marine biologist and works as marine environmental consultant. Vicki has also coordinated a local community education project in Tanzania and worked as the South Wales 'Seasearch' Coordinator.

Vicki works as an independent leadership trainer, lecturer, tutor and coach and has a particular interest in experiential learning with children and developing training materials which can be used as a catalyst for conversations.

**Inspiring and enabling children to change their world**

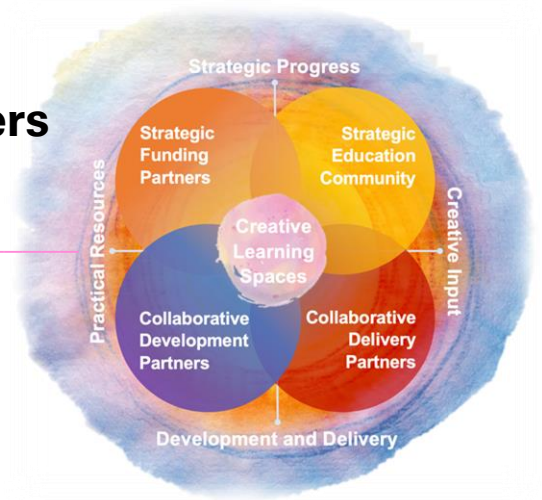
---





# Collaborative Development Partners

An example: Caplor Horizons



**Collaborative Development Partners** contribute to our organisational development and strategic progress. Paper Boat has worked with Caplor Horizons for almost two years. Caplor is a charity that works with other charities to help them strengthen their leadership, renew their strategy and improve their influence.

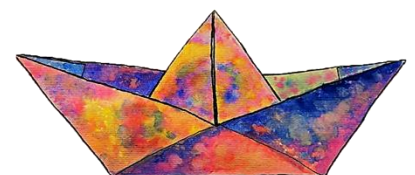


Caplor Horizons not only contribute to the Collaborative Development group, but are also expert advisors to our Strategic Education Community as well as supporting our Collaborative Delivery Partners.

They are an excellent example of how one organisation can influence many elements within our structure. Advising on strategy, leadership and influence, Caplor has helped to build capacity across the whole project partnership.

Caplor work both nationally and internationally and provide thought leadership to individuals and organisations in over 30 countries.

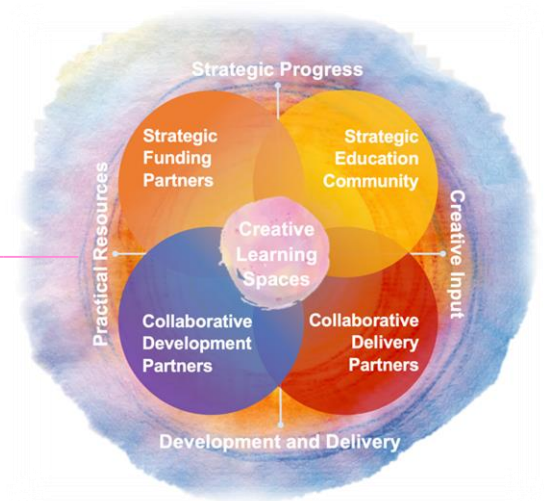
Inspiring and enabling children to change their world





# Collaborative Delivery Partners

An example: CEDAR & Children Watch



**The Centre for Education Development Action and Research** was established in 1994, mainly to address the problem of child labour which was prolific in Southern Tamil Nadu. CEDAR was not only engaged in direct interventions in the community to abolish child labour but also helped in building the capacity of small NGOs who were keen to work on child rights.

CEDAR's model of 'child rights activism' was acknowledged by the 'First International Conference of NGO Support Organizations', convened by INTRAC at Oxford, UK in 1998. For over 25 years CEDAR has partnered with several INGOs, corporations, international charities and government agencies in India.

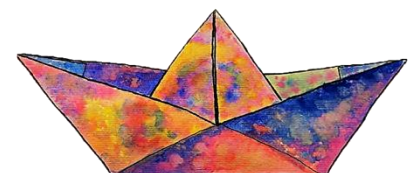


These include Zurich Financial Services Community Trust, UK, Action Aid India, Women Development Corporation of Government Tamil Nadu, and the British High Commission.

CEDAR's greatest strength is its ability to develop 'rights-based community action strategies' to create 'child centred spaces' in families, schools and communities.

At its peak, CEDAR was working in 165 village communities to liberate child labourers. CEDAR has worked in partnership with Paper Boat for more than 20 years and, given the close alignment of vision, values, purpose and mission, serves as Paper Boat's Nodal Agency in India – providing arms-length coordination, networking, monitoring, evaluation and sharing of learning across our programmes and partnerships.

Inspiring and enabling children to change their world





**Children Watch/Tribal Dalit Initiatives (TDI)** was established in 2018.

It is committed to a new dawn for the Dalit and Tribal communities of Kanchipuram District, Tamil Nadu, India. TDI believe a light needs to be shone on the injustices facing the Dalit and Tribal communities, especially about the acute challenges faced by women and children.

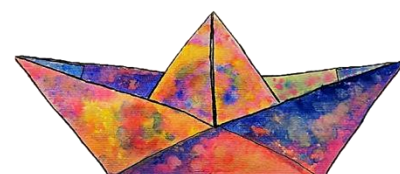


They advocate for a social reformation to address these injustices and are dedicated to implementing practical programmes to bring about sustainable change to reduce poverty, restore dignity and attain peoples Human Rights.

The network is led by T. Raj, the convenor of Tribal Dalit Initiatives and Director of Kanchipuram based NGO Children's Watch. The network has 14 NGO members. All the NGOs are based in Kanchipuram District. Children Watch and TDI work with CEDAR and Paper Boat in setting up prototype Children's Hubs for Irular tribal communities.

**Inspiring and enabling children to change their world**

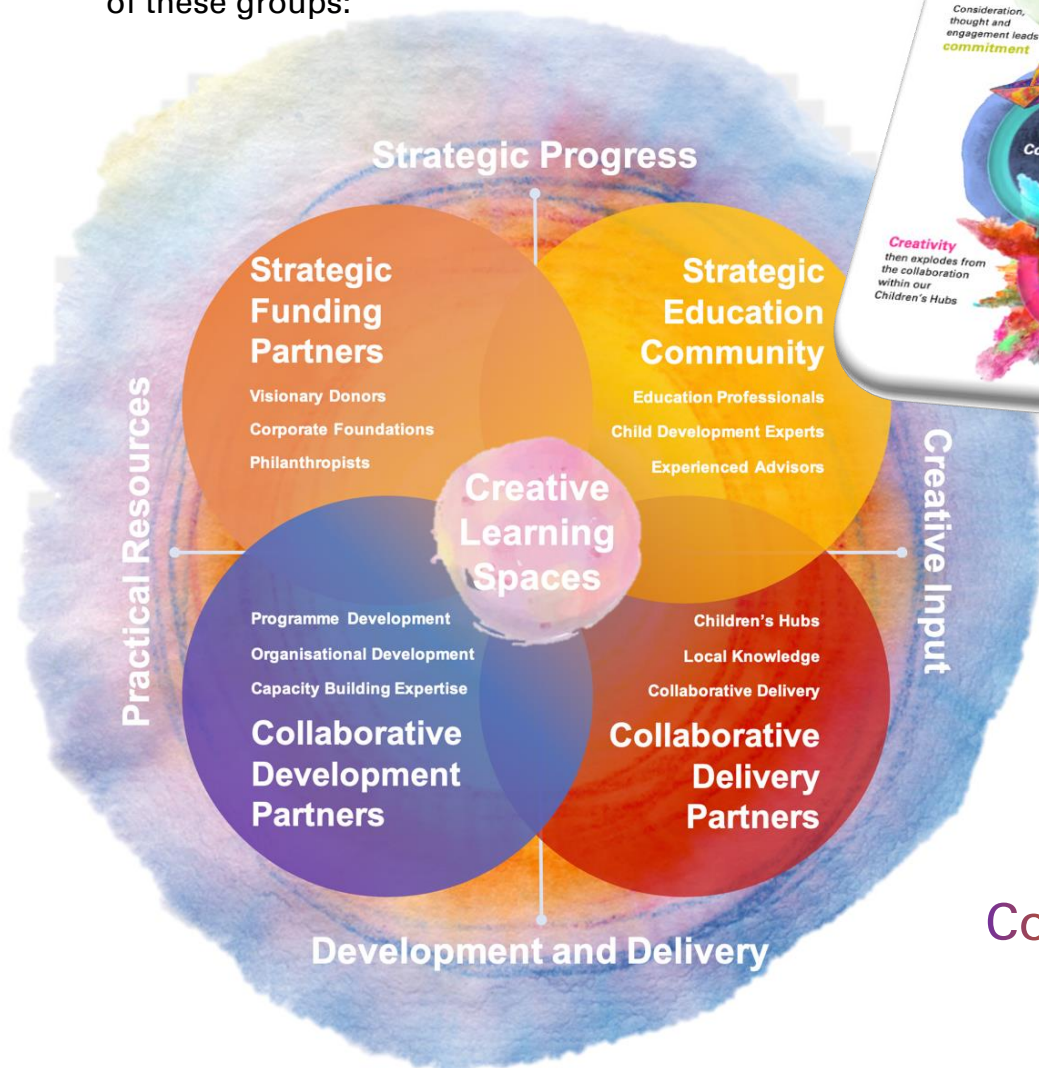
---





# Can you collaborate with us?

Could you, or your organisation, contribute to one of these groups:



Do you share our values:

**Courage**  
child centred

**Creativity**  
innovative action

**Collaboration**  
stronger together

If so, please contact us at:

**Paper Boat**  
1 & 3 Kings Meadow  
Osney Mead  
Oxford  
OX2 0DP

or telephone us on:

**+44 (0) 1865 800 019**

or email us at:

[kemal@paperboatcharity.org.uk](mailto:kemal@paperboatcharity.org.uk)

[jo@paperboatcharity.org.uk](mailto:jo@paperboatcharity.org.uk)

**Inspiring and enabling children to change their world**

